

Long COVID, POTS, and ME/CFS: Lifting the Fog

Patrick Chambers*

Department of Pathology, Torrance Memorial Medical Center, Torrance, California

Corresponding Author*

Patrick Chambers

Department of Pathology, Torrance Memorial Medical Center,

Torrance, California

Email: pwc@gte.net

Copyright: ©2023 Chambers, P. This is an open-access article distributed under the terms of the Creative Commons Attribution License, which permits unrestricted use, distribution, and reproduction in any medium, provided the original author and source are credited.

Received: 23-Mar-2023, Manuscript No. jnn-23-92600; **Editor assigned:** 25-Mar-2023, Pre QC No. jnn-23-92600 (PQ); **Reviewed:** 28-Mar-2023, QC No. jnn-23-92600 (Q); **Revised:** 29-Mar-2023, Manuscript No. jnn-23-92600 (R); **Published:** 31-Mar-2023, DOI: 10.35248/2332-2594.23.14(3).341

Abstract

These three syndromes - Long Covid (LC), Postural Orthostatic Tachycardia Syndrome (POTS), and Myalgic Encephalomyelitis/Chronic Fatigue Syndrome (ME/CFS) have many symptoms in common. The common denominator remains elusive. The Blood Brain Barrier (BBB) has been a barrier not only to microbes and toxins but also to understanding pathogenetic links. There are several areas within the brain that have no BBB. These are known as Circumventricular Organs (CVOs) and their location relative to CNS nuclei that direct autonomic and neuroendocrine functions is provocative in the quest for pathogenesis. In addition the majority afflicted with LC and ME/CFS appear to be those with two MTHFR polymorphisms, present in over 50% of Americans. These polymorphisms elevate homocysteine. When Homocysteine (Hcy) is combined with CVOs, the fog of POTS and its paradox are lifted. POTS may represent the intersection of LC and ME/CFS in those with the MTHFR gene (hyper methylation or 677TT). The gut microbiomes of LC and ME/CFS, deficient in butyrates, Gamma Aminobutyric Acid (GABA), and diversity, are then linked with MTHFR genotype 677TT. Reactivation of neurotropic EBV and Varicella Zoster Virus (VZV), due to loss of surveillance by CD4⁺/CD8⁺ T cells, is seen as secondary. The oxidative stress generated by Hcy, loss of glutathione, low fiber diet, and persistent chronic inflammation exhaust available mitochondria and, assisted by BKN and estrogen, exacerbate all the elements of these post viral fatigue syndromes.

Keywords: Homocysteine • Circumventricular Organ • Magnesium • Vitamin D

Introduction

Background

Covid-19 has unleashed a tsunami of research that has been further energized by the persistent and debilitating aftermath of Long Covid. Explaining the gender reversal from male to female preponderance is challenging and covering the range of symptoms intimidating. Although there have been a few hypotheses incorporating autoantibodies, nutrient deficiencies, reactivation of Epstein-Barr Virus (EBV), resolution of the paradoxes remains frustratingly out of reach. Recent research has revealed that the BBB is not all inclusive and that some areas of the CNS are not so protected. These are called Circumventricular Organs (CVOs). Other research has revealed a close association between Covid-19 and a very common enzymatic polymorphism in the folate cycle involving Methylenetetrahydrofolate Reductase (MTHFR) [1,2]. Most with

this polymorphism are unaware of it. But it may play a large role in Long Covid and may provide unique insight into its pathogenesis. Incorporating the multiorgan involvement of LC and its bewildering range of symptoms into a single all-encompassing model is a complex task [3-7]. Receptor polymorphisms, enzyme polymorphisms, the impact of methylation on suppressor and promoter genes, create a maze. Broad strokes only are presented here.

Literature Review

The autonomic and neuroendocrine symptoms of LC, POTS, and CFS are primarily determined by CNS nuclei located in areas without a BBB. LC and ME/CFS microbiomes incriminate low fiber diets that support low bacterial diversity with production of minimal Short Chain Fatty Acids (SCFAs), e.g., butyrates, GABA, and B vitamins. This collective shortfall drives the symptoms of these syndromes. POTS represents the intersection of LC and ME/CFS that are predominantly undiagnosed MTHFR 677TT, present in over 30%-40% of the population. The oxidative stress of Hcy in the MTHFR genotype, the residual *spike protein S* in LC, and reactivated viruses due to persistent lymphopenia conspire to overwhelm mitochondria lacking an antioxidant shield. Estrogen and BKN play prominent supporting roles.

MTHFR and Homocysteine

The MTHFR gene markedly compromises conversion of 5,10-methylenetetrahydrofolate to 5-methyltetrahydrofolate. This is critical to the recycling of methyl groups (one carbon pathway or folate cycle). This defective gene leads to an increase in homocysteine, which can't be sufficiently methylated via B12 to return to methionine (Figure 1). If the active form of B6 (P5P) is not sufficient, then glutathione, the master antioxidant, will not be produced. ROS will increase and mitochondrial function compromised.

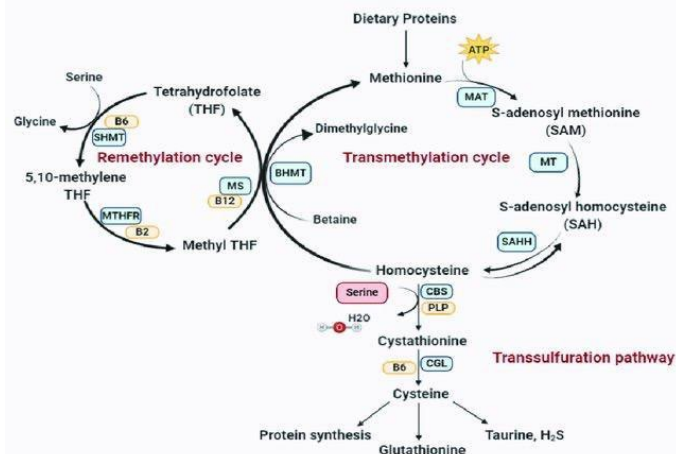


Figure 1. Recycling of Hcy in the methionine cycle is enabled by methyl THF, otherwise compromised by the MTHFR gene. Activated B2, B6, and B9 are required in the folate cycle. Folate is vitamin B9. PLP is B6.

The MTHFR 677T allele frequency is high in Europe (24.1%-64.3%), and low in Africa (0%-35.5%). The MTHFR 1298C allele frequency is approximately 20%-70% in Asia, 24%-46% in Europe, and 0%-15% in America. According to the CDC, there are more people in the United States who have one or two copies of the MTHFR C677T variant than people who do not. About 30%-40% of the American population may have the C677T mutation. Roughly 25% of people of Hispanic descent and 10%-15% of Caucasian descent are homozygous for this variant. So this is an exceedingly common polymorphism with incidence that somewhat reflects the percentage of individuals that develop LC.

Hcy is a strong marker for both LC2, the MTHFR gene5, and for ME/CFS6. High Hcy may be a good marker for the MTHFR gene and low folate

may be a good negative marker for homocysteine. Hcy is a strong marker for thrombosis and may explain the oft encountered thrombosis in Covid-19. Hcy via CVOs causes brain fog in LC (see CVO section) [8].

Wild type and heterozygous MTHFR gene variants characteristically exhibit hypomethylation [9]. But when the genotype is 677TT (homozygous), DNA over methylation is encountered [10]. Those homozygous for 677T need higher doses of 5-methyltetrahydrofolate (methylfolate) [11].

Methylation status in the body can be determined by measuring whole blood histamine, as histamine and methylation are inversely related. Low blood histamine levels indicate that the individual may be over methylated; high levels indicate under methylation [12].

Postural orthostatic tachycardia syndrome

POTS represent a complex mixture of genetic and epigenetic inputs. It generally exhibits an 80%-90% female predominance, afflicts those, and is typically precipitated by a viral infection [13]. POTS are considered a disorder of the Hypothalamus-Pituitary-Adrenal (HPA) axis that comes with a paradox low renin and low aldosterone in the face of low blood volume. This was originally reported in POTS with ME/CFS and later with LC [14]. In addition to low renin and aldosterone ME/CFS patients have lower levels of oxytocin, Corticotropin-Releasing Hormone (CRH), and vasopressin (ADH) [15].

Low GPOTS

Almost all POTS patients are hypovolemic. Most are low flow (neuropathic). All with low flow POTS have elevated Ang II and low PRA. Almost 70% of those with CFS have orthostatic intolerance [16]. These may represent those with concomitant but undiagnosed MTHFR 677TT [17].

The tonic vasoconstriction shrinks blood volume and the Juxtaglomerular Apparatus (JGA) senses relative norm tension. Renin is lower than would be otherwise expected. Neuropathic POTS patients have angiotensin II autoantibodies or beta adrenergic autoantibodies [18-20]. Autoantibodies to receptors can block or accentuate their actions, but in neuropathic POTS autoantibodies accentuate expression [21,22]. Angiotensin II antibodies have also been found in LC [23]. ARBs can block both angiotensin II type 1 receptors and beta adrenergic receptors [24].

Low flow or neuropathic POTS can also be seen in the absence of autoantibodies when the vasodilator Nitric Oxide (NO) has been oxidized [25]. This can also be blocked by ARBs [26].

Vascular leakage induced by BKN might explain the lower limb cyanosis in neuropathic POTS. A preceding viral respiratory infection can upregulate BKN tenfold [27].

Down regulation of ACE (ACE degrades BKN) by estrogen combined with a viral infection can supercharge BKN. This indirect inhibition of renin by BKN is greater than direct inhibition of renin by the RAS [28]. This might partially explain the decreased renin in the POTS paradox. An increased Ca/Mg might also contribute [29,30].

High flow POTS

There is a small subset of POTS that exhibits high flow, characterized by hypovolemia and reduction in renin and aldosterone activity. High flow POTS patients suffer from the same precipitating factors, viral infection, and pregnancy. POTS seen in MCAS and EDS may reflect this hyper adrenergic type [31]. BKN in this predominantly female subset may work in concert with MCAS to cause hypovolemia [32]. There is strong linkage between MCAS, POTS, and EDS [33].

ARBs down regulate TGF- β 1, increased in Marfan's, i.e., type IV Ehlers-Danlos Syndrome (EDS) [34,35]. Further delineation waits.

Gut microbiome

The neuropathic type of POTS seen in ME/CFS16 might be due to a CVO mediated glutamate/GABA imbalance that leads to decreased ADH, oxytocin, and CRH (see CVO section). It is both a neuroendocrine and an autonomic disorder. Gut microbiome studies of both LC and ME/CFS report deficiencies in butyrate and GABA producing bacteria, e.g., *Bacteroides*, *Bifidobacterium dentium*, and *Lactobacillus brevium* [36-40]. *Bacteroides* not only drives gut microbiota diversity but also is one of only 6 known species that produces the active P5P (PLP). B6 deficiency itself reduces the relative abundance of *Bacteroides* in the microbiota [41].

Without P5P glutathione cannot be synthesized from Hcy (Figure 1). A gut microbiome that lacks an abundance of histamine degrading *Bifidobacteria* leaves allergic features unopposed [42]. This may be contributory to MCAS. GABA secreted by histaminergic neurons also downregulates histamine signaling. The endogenous pathways for the degradation of histamine require either methylation (S-AdoMet, Mg²⁺, and ATP) or mitochondrial ALDH. Alcohol intolerance is a primary complaint in LC, CFS, and MCAS with their dysfunctional mitochondria. Hepatic metabolism of alcohol in such individuals stops at acetaldehyde and a giant hangover.

LC, ME/CFS and by extension POTS share gut microbiome features that underscore the criticality of bacterial GABA synthesis to proper functioning of the HPA axis, mediated by CVOs. GABA receptor polymorphisms are linked with Restless Legs Syndrome (RLS) [43,44]. RLS is a subset of Periodic Limb Movement Disorder (PLMD) aka nocturnal myoclonus. This is considered to be a seizure disorder and is increased in LC, ME/CFS, and POTS. GABA is used to treat seizure disorders. This further underscores the role of GABA deficiency in the pathogenesis of POTS, LC, and CFS [45-47].

CVOs

Several recent articles have highlighted CVOs [48,49]. There are several areas within the brain that abut ventricles and have no blood brain barrier. Several of these, which are called Circumventricular Organs (CVOs), are quite relevant to the autonomic and neuroendocrine dysfunctions of LC.

These areas are the pineal gland, the posterior pituitary a.k.a. neurohypophysis, the Paraventricular Nucleus (PVN) in the median eminence, the Area Postrema (AP), the Organum Vasculosum of the Lamina Terminalis (OVLT) or supraoptic crest, and the subfornical organ (Figure 2).

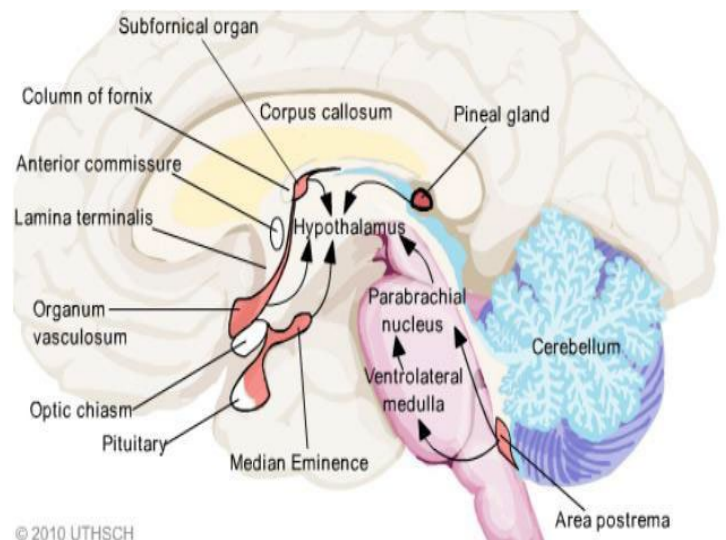


Figure 2. T Red structures designate CVOs. The inferior area postrema is at the foramen of Magendie.

The AP is part of the dorsal vagal complex, closely associated with baroreceptors and chemoreceptors, as well as cranial nerves VII and IX (Figure 3).

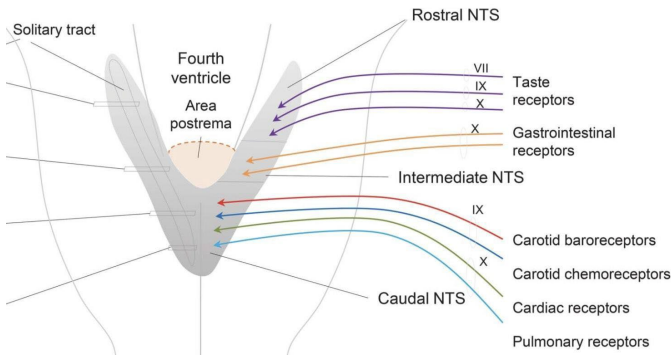


Figure 3. The AP, the dorsal motor nucleus of X, and the nucleus of the solitary tract form the dorsal vagal complex.

CVOs enable a diet induced CNS glutamate (excitatory)/GABA (inhibitory) imbalance to precipitate not only POTS but also symptoms that involve decreased oxytocin, vasopressin (ADH), Corticotropin Releasing Hormone (CRH for ACTH), and Gonadotropin Releasing Hormone (GnRH for LH, FSH) [50,51].

CVOs can conveniently explain the POTS paradox in the neuropathic hypovolemic low flow subtype (majority). The PVN normally inhibits the baroreflex via tonic GABAergic inputs [52]. GABAergic signals also dictate secretion of neurohypophyseal hormones, including vasopressin (ADH), oxytocin (Figure 4), CRH56, and GnRH57. GABA inhibits the secretion of TRH58 [53,58].

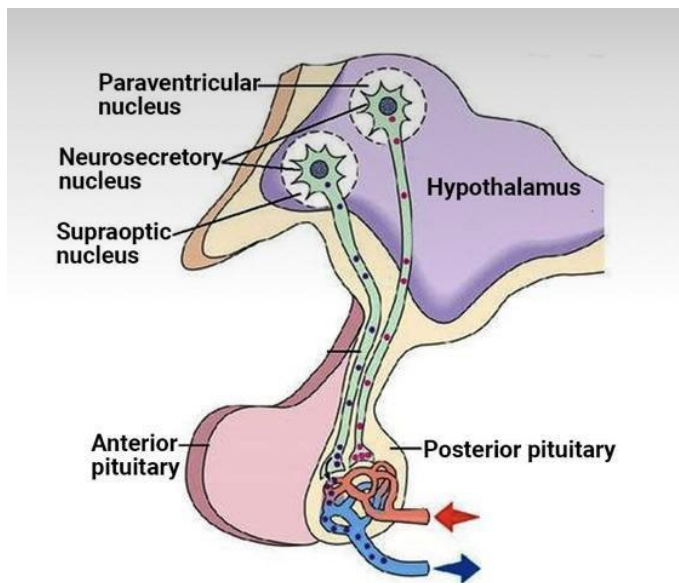


Figure 4. Neuroanatomy and function of the PVN and posterior pituitary.

The lamina terminalis controls renal secretion of renin and angiotensin. ME/CFS patients have experienced relief from desmopressin and CRF [59-61]. POTS and ME/CFS have benefited from exogenous CRF and vasopressin (ADH) [62]. Oxytocin in CFS increased stamina, decreased pain, improved cognitive function, decreased fibromyalgia pain, anxiety, and depression. Some LC patients have experienced relief with oxytocin [63]. Many POTS patients claim heat intolerance and this may be mediated by unopposed glutamate [64].

Methylation and shingles

In a recent review compared to controls, patients that experienced mild to moderate COVID-19 or LC exhibited hypo methylation and hypermethylation respectively [65]. This reflects the methylation disposition of MTHFR wild type and 677TT respectively, i.e., wild type quickly recovered and 677TT devolved into LC. Hyper methylation in LC persisted for one year after hospitalization [66]. The hyper methy-

-lated have higher Hcy levels, which portend more serious Covid-19 and LC [67].

Alcohol intolerance is almost universal among ME/CFS patients [68]. Acetaldehyde, produced by the liver, must then be metabolized in mitochondria. Post exertional malaise may then be joined by a persistent post alcohol hangover.

Shingles serves as a good example for modeling the pathogenesis of LC. VZV can emerge from its Dorsal Root Ganglion (DRG) and invade its designated peripheral sensory nerve (shingles) or it can invade sensory fibers of the facial nerve (VII). These facial nerve sensory fibers emerge from the NTS and the AP (Figure 3). The AP is the first CVO encountered by any VZV migrating upstream through the subarachnoid CSF and the foramen of Magendie and into the fourth ventricle from its DRG origin. Justin Bieber encountered herpes zoster oticus affiliated with cranial nerve VII (Ramsay Hunt Syndrome) post vaccine. Shingles risk is definitely increased in those with LC or CFS [69]. This may be due to hypermethylation that characterizes LC, as lysine is hyper methylated initiating cold sores70. Whether the culprit virus is VZV, Human Herpes Virus 6 or 7 (HHV 6,7) or is a recent (migrating) or remote resident (dormant), e.g., geniculate ganglion, seems moot [70].

Autoimmunity in females

Increased autoimmune disease in females may be due to their enhanced innate immunity and production of pleiotropic IFN gamma. When combined with chronic low grade inflammation, this pro-inflammatory pleiotropic cytokine may switch from self-recognition to autoimmune status [71].

IFN gamma is primarily secreted by CD4+ and CD8+ T cells. These cells also induce production of C1 esterase inhibitors (C1INH) by hepatocytes. Lymphopenia is associated with persistence of COVID-19 symptoms [72]. CD147 (basigin) receptors but not ACE2 receptors are found on Peripheral Blood Mononuclear Cells (PBMCs) [73]. This receptor may mediate the lymphopenia. CD147 epitopes are also found on the spike protein S, as discovered, and are responsible for this T cell lymphopenia and drop in surveillance. Any subsequent viral infection that challenges lymphocytes opens the door to the classic complement cascade, which cross talks with the Kallikrein Kinin System (KKS) and increases BKN [74].

Estrogen affects more than BKN. It may play a role in neurogenic POTS by decreasing renin levels, ACE activity (increasing BKN), AT1 receptor density, and aldosterone [75].

In addition estrogen appears to lower cortisol and ACE2, at least in the lungs [76,79]. Perhaps lower pulmonary ACE2 is COVID 19 protective, but the downregulated ACE2 may be associated with higher levels of des-Arg9-bradykinin (Figure 5). Des-arg-BKN appears to be a prominent kinin in COVID-19.

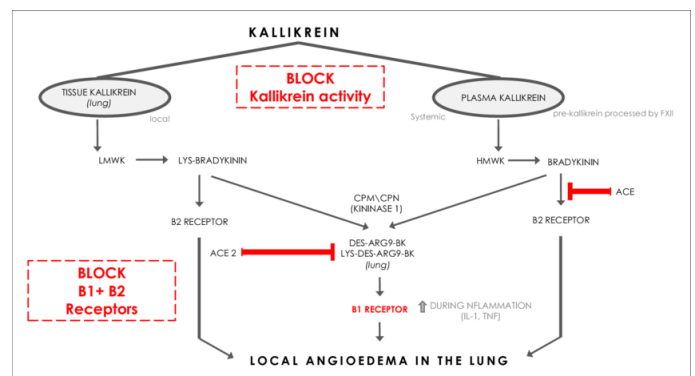


Figure 5. ACE2 degrades des-argBKN (BK1R) and ACE degrades BKN (BK2R)ACE and ACE2 are neuroprotective.

Mitochondria and oxidative stress

Mitochondrial health is especially important in maintaining optimal levels of active vitamin D. Men with the highest compared to lowest 1,25(OH)2D and activation ratios, i.e., active form/storage form, (1,25(OH)2D/25(OH)D) are more likely to possess butyrate-producing bacteria that are associated with favorable gut microbial health.

Sun exposure may affect the storage form of vitamin D, but it exerts little influence on the active hormone [80]. Oxidative stress (ROS due to inflammation, smoking, toxins) compromises mitochondrial oxidative phosphorylation. If these ROS are not quenched by onboard antioxidants, the cell risks lysis [81]. Many mitochondria are shut down to avoid this, diminishing ATP production. The Krebs or TCA cycle with its electron transport chain ETC also requires activated B2 and B3. ATP is required to synthesize Glutamine (Gln) from Glutamate (Glu) and to recycle GABA in astrocytes (Figure 6). Recycling of Glu is not so limited. Any shortage of active B6 (P-5-P), required by Glutamate Decarboxylase (GAD), further compromises production of GABA from glutamate.

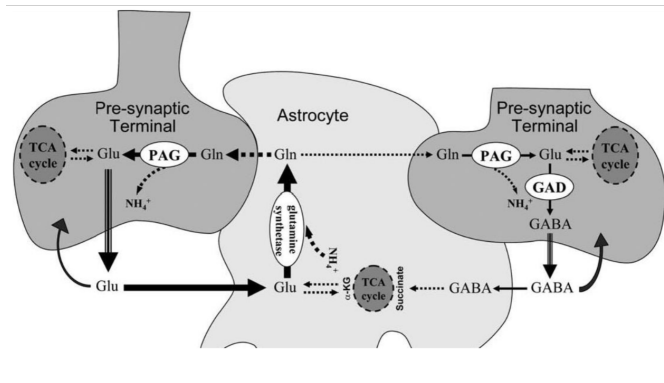


Figure 6. ACE2 degrades des-argBKN (BK1R) and ACE degrades BKN (BK2B) ACE and ACE2 are neuroprotective

Magnesium and vitamins

Magnesium deficiency is an additional plausible explanation for low aldosterone and low cortisol. Synthesis of aldosterone requires aldosterone synthase and synthesis of cortisol requires 11 beta hydroxylase. These two enzymes are part of the CYP450 system, all of which require Mg^{2+} . Furthermore these two reactions occur in the mitochondria, i.e., they also require ATP [82,83]. If oxidative stress is sufficient and antioxidants are not, mitochondria are shut down and ATP down regulated, limiting synthesis of aldosterone and cortisol [84]. Females are more magnesium deficient than males before age 50 (Figure 7). An elevated Ca:Mg may also compromise synthesis of aldosterone and cortisol. Magnesium is also required for the synthesis of all 8 B vitamins,

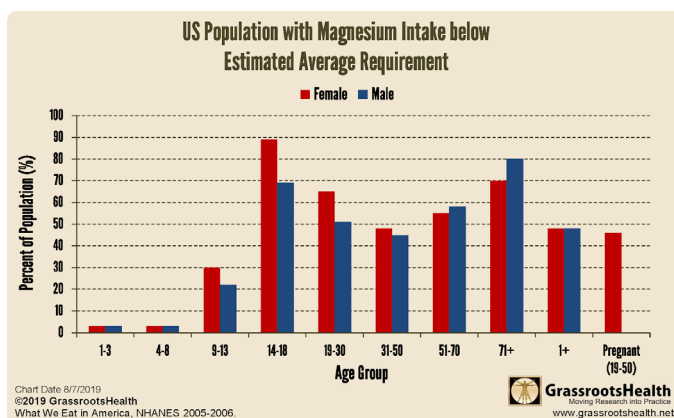


Figure 7. Females less than 50, the vast majority of those with POTS, are more deficient in Mg^{2+} than their male counterparts.

except biotin (B7). Mitochondrial function is dependent upon adequacy of all the B vitamins [85].

If mitochondrial function is marginal, production of the active form of vitamin D may be marginal. Mitochondrial CYP27B1 is the only enzyme that hydroxylates C1 (activates vitamin D) [86].

Thiamine (B1), riboflavin (B2), niacin (B3), pantothenate (B5), pyridoxine (B6) require phosphorylation for activation. Cyanocobalamin and folate require methylation (SAME) for activation. Magnesium is required for both phosphorylation and methylation. Hcy is highly influenced by B vitamin status [87].

The last enzymatic step to produce serotonin, dopamine, and GABA are decarboxylases that require active B6 (P5P), as a cofactor. Not surprisingly B6 enhances libido. Melatonin and glutathione synthesis also requires B6.

Norepinephrine synthesis requires magnesium. A shortfall in magnesium or B6 compromises monoamine neurotransmitter synthesis and leads to depression, a symptom shared by LC, POTS, ME/CFS, MCAS, and EDS. High doses of pyridoxine are associated with peripheral neuropathy, whereas high doses of the active form (P5P) are not [88]. Estrogens compete with B6 for some receptor sites including that for serotonin synthesis [89].

Thoughts on therapy

Changing one's diet is more difficult than changing one's religion. But adding a little supplemental glutamate might help in the meantime. Attaining a blood Ca/Mg around 2.0 can also be challenging. But maintaining a 25(OH)D3 of 50 ng/mL with abundant antioxidants is critical to its activation to 1,25(OH)2D3. Ca:Mg~2.0 helps in this regard. Other recommended epigenetic actions include supplementing with the methylated or phosphorylated forms of all the B vitamins, especially methyl folate. Absorption of magnesium and B6 is enhanced when taken together. A good supplementary probiotic (with some GABA) might be worth considering. However, under professional supervision Angiotensin Receptor Blockers (ARBs) might be worth pursuing, but even a small dose can elicit mild hypoglycemia and/or hypotension (Figures 8 and 9).

The potential benefits of ARBs for LC include:

- ARBs upregulate GABA, which displays anti-hypertension, anti-senescence, anti-diabetes, antioxidant, and anti-inflammatory properties [90].
- ARBs block AT1Rs (and hypertension induced dementia) and increase ACE [91].
- ARBs alleviate POTS26 and degrade BKN otherwise associated with AD [92].
- ARBs increase ACE2 that degrades amyloid β -peptide ($A\beta$) in AD [93, 94].
- ARBs down regulate TGF- β 1, increased in LC, CFS, AD, Marfan Syndrome34, and Ehlers–Danlos Syndrome (EDS [95-98].
- ARBs improve insulin sensitivity and are antidiabetic.
- ARBs are neuroprotective.

Indeed, a post mortem study of brains demonstrated more neuropathology in non-hypertensives, than in hypertensives on ARBs. Furthermore, angiotensin II-stimulating antihypertensive, e.g., ARBs, exhibited lower dementia risk than angiotensin II inhibiting antihypertensive, e.g., ACEIs.

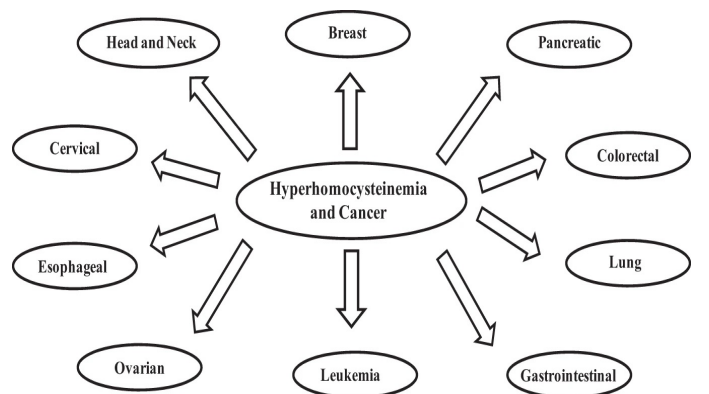


Figure 8. Lung and breast cancer are increased in hyper- and hypomethylation

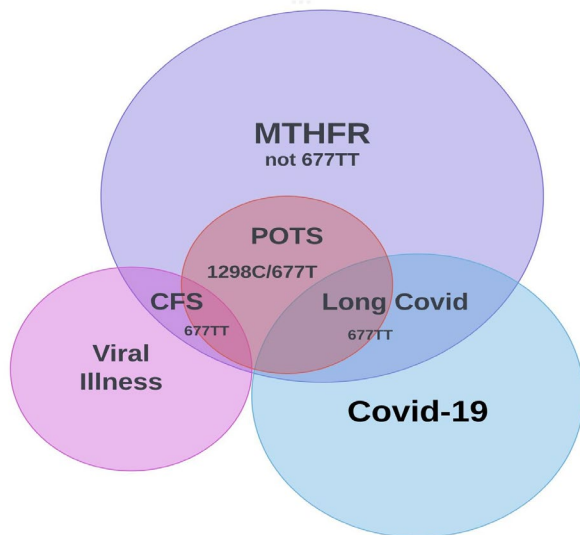


Figure 9. Venn view of hypothesis. Circle sizes not to scale. LC and CFS have similar microbiomes with low GABA. CVOs enable this low GABA to create the so-called POTS Paradox. The MTHFR 677TT are hyper methylated.

Conclusion

In summary LC reveals undiagnosed MTHFR 677TT present in 30%-40% of the population? These patients comprise the majority of those with LC and POTS. The integration of CVOs with the gut microbiome opens new insight into the POTS paradox and links LC, POTS, and ME/CFS. Homocysteine, a marker for MTHFR polymorphisms, is elevated in LC and ME/CFS. It can directly access the BBB less CNS and is directly proportional to brain fog severity and oxidative stress. In the absence of critical cofactors synthesis of the master antioxidant glutathione from Hcy cannot proceed. HIV (low CD4/CD8) and SARS CoV2 (high CD4/CD8) specifically target CD4+ and CD8+ T cells respectively, disabling surveillance of intracellular pathogens and enabling the emergence of EBV and VZV, previously dormant within dorsal root ganglia. VZV also targets CD8+ T cells. Loss of these T cells translates to a decrease in IFN gamma and with it a decrease in hepatic C1INH. The classic complement pathway is triggered and the KKS is activated. BKN is released. Any recent viral infection induces additional release of BKN. Estrogen, an ACE inhibitor, prolongs BKN half life. BKN combines with histamine to produce low volume low flow POTS. The LC and ME/CFS gut microbiomes lack biodiversity (insufficient *bifidobacteria*, *lactobacilli*). These latter bacteria produce butyrates (SCFAs), GABA, B vitamins, and can degrade histamine.

Subsequent inflammation induced oxidative stress from homocysteine, residual *spike S protein*, and reactivated viruses conspire to overwhelm those with insufficient on board antioxidants. An additional magnesium shortfall in 15 years-50 years old females leads to fatigue and post exertional dyspnea. In the presented hypothesis methylation plays a prominent role. It is at the center of the *MTHFR* gene, afflicting undiagnosed millions, now suffering from LC and/or POTS. This information is easily available via 23 and me or a blood test for homocysteine. This should be job one. If the latter is within normal limits, then *MTHFR* is off the table. 677TT creates a 70% bottleneck and 1298C/677T a 30% bottleneck in recycling/removing Hcy. Elevated Hcy carries many short term (thrombosis) and long-term problems, best addressed ASAP. Although the primary threat is vascular, the hyper methylation seen in LC is also a marker for many cancers .

Hypo methylation (methylation decreases with age) is seen in hepatocellular carcinoma, breast cancer, lung cancer, nasopharyngeal cancer, smooth muscle sarcoma, and neuroendocrine tumor. Note some are increased in both hyper- and hypo methylation. Methylation is only half the story. Sufficient antioxidants to protect mitochondria are vital. Heart Rate Variability (HRV), which varies inversely with *High Sensitivity C Reactive Protein (hs-CRP)*, should reflect oxidative stress. Given the high frequency of this polymorphism in the general population and its potential devastation, everyone should be privy to their risks and those of their offspring, especially in the post COVID era.

References

- Karst, M. Life-threatening course in coronavirus disease 2019 (COVID-19): Is there a link to methylenetetrahydrofolate reductase (MTHFR) polymorphism and hyperhomocysteinemia *Med Hypotheses*.144 (2020):110234.
- Ponti, G., et al. COVID-19 spreading across world correlates with C677T allele of the methylenetetrahydrofolate reductase (MTHFR) gene prevalence. *J Clin Lab Anal*. 35.7 (2021):23798.
- Al-Sadeq, DW., et al. The spectrum of mutations of homocystinuria in the MENA region. *Genes*.11.3 (2020):330.
- Yang, B., et al. Geographical distribution of MTHFR C677T, A1298C and MTRR A66G gene polymorphisms in China: findings from 15357 adults of Han nationality. *PloS one*. 8.3 (2013):57917.
- Carpenè, G., et al. Homocysteine in coronavirus disease (COVID-19): a systematic literature review. *Diagnosis*. (2022).
- Regland, B., et al. Increased concentrations of homocysteine in the cerebrospinal fluid in patients with fibromyalgia and chronic fatigue syndrome. *Scand j rheumatol*.26.4(1997):301-07.
- Bottiglieri, T., et al. Homocysteine, folate, methylation, and monoamine metabolism in depression. *J neurol neurosurg psychiatry*.69.2 (2000):228-32.
- Oner, P., et al. High Homocysteine Levels Are Associated with Cognitive Impairment in Patients Who Recovered from COVID-19 in The Long Term. *J Pers Med*. 13.3(2023):503.
- Ren, JC., et al. MTHFR gene polymorphism is associated with DNA hypomethylation and genetic damage among benzene-exposed workers in southeast China. *J Occup Environ Med*. 60.4 (2018):188-92.
- Fryar-Williams, S. Fundamental role of methylenetetrahydrofolate reductase 677 C→ T genotype and flavin compounds in biochemical phenotypes for schizophrenia and schizoaffective psychosis. *Front Psychiatry*. 7(2016):172.
- Ashfield-Watt, PA., et al. Methylenetetrahydrofolate reductase 677C→ T genotype modulates homocysteine responses to a folate-rich diet or a low-dose folic acid supplement: a randomized controlled trial. *Am j clin nutr*. 76.1 (2002):180-186.
- Chambers, P. LC, POTS, and ME/CFS: Lifting the Fog.
- Raj, SR. The postural tachycardia syndrome (POTS): pathophysiology, diagnosis & management. *Indian pacing electrophysiol j*.6.2 (2006):84.
- Chadda, KR., et al. Long COVID-19 and postural orthostatic tachycardia syndrome-is dysautonomia to be blamed?. *Front Cardiovasc Med*. (2022).
- Carruthers, BM., et al. Myalgic encephalomyelitis/chronic fatigue syndrome: clinical working case definition, diagnostic and treatment protocols. *J chronic fatigue syndr*.11.1 (2003):7-115.
- Okamoto, LE., et al. Neurohumoral and haemodynamic profile in postural tachycardia and chronic fatigue syndromes. *Clin sci*. 122.4 (2012):183-92.

17. Stewart, JM., et al. Increased plasma angiotensin II in postural tachycardia syndrome (POTS) is related to reduced blood flow and blood volume. *Clin sci*.110.2 (2006):255-63.
18. Yu, X., et al. Angiotensin II type 1 receptor autoantibodies in postural tachycardia syndrome. *J Am Heart Assoc*.7.8 (2018):008351.
19. Fedorowski, A., et al. Antiadrenergic autoimmunity in postural tachycardia syndrome. *Ep Europace*.19.7: (2017) 1211-19.
20. Badiudeen, T., et al. A functional cell-based bioassay for assessing adrenergic autoantibody activity in postural tachycardia syndrome. *J transl autoimmun*.2 (2019):100006.
21. Wirth, K. A Unifying Hypothesis of the Pathophysiology of Myalgic Encephalomyelitis/Chronic Fatigue Syndrome (ME/CFS): Recognitions from the finding of autoantibodies against β 2-adrenergic receptors. *Autoimmun Rev*. 19.6 (2020):102527.
22. Briquez, PS., et al. Severe COVID-19 induces autoantibodies against angiotensin II that correlate with blood pressure dysregulation and disease severity. *Sci Adv*. 8.40 (2022):3777.
23. Barki-Harrington, Let., al. Dual Inhibition of β -Adrenergic and Angiotensin II Receptors by a Single Antagonist. *Circulation*. 108.13 (2003):1611-18.
24. Medow, MS., et al. Decreased microvascular nitric oxide-dependent vasodilation in postural tachycardia syndrome. *Circulation*. 112.17 (2005):2611-8.
25. Stewart, JM., et al. Angiotensin II type 1 receptor blockade corrects cutaneous nitric oxide deficit in postural tachycardia syndrome. *Am J Physiol-Heart Circ Physiol*. 294.1 (2008):H466-73.
26. Al-Kaif, LA., et al. Association between the level of Bradykinin and viral infection in patient suffering from respiratory infection, renal transplant, and renal failure. *Ann Trop Med Public Health*. 23 (2020):12.
27. Kiowski, W., et al. Blood pressure control by the renin-angiotensin system in normotensive subjects. Assessment by angiotensin converting enzyme and renin inhibition. *Circulation*. 85.1 (1992):1-8.
28. Persson, PB. Renin: origin, secretion and synthesis. *J physiol*. 552.3 (2003):667-71.
29. Zhang, Q., et al. Orthostatic plasma norepinephrine level as a predictor for therapeutic response to metoprolol in children with postural tachycardia syndrome. *J Transl Med*. 12.1 (2014):1-6.
30. Oschatz, C., et al. Mast cells increase vascular permeability by heparin-initiated bradykinin formation in vivo. *Immunity*. 34.2 (2011):258-68.
31. Wang, E., et al. The relationship between mast cell activation syndrome, postural tachycardia syndrome, and Ehlers-Danlos syndrome. *In Allergy Asthma Proc*. (2021).
32. Habashi, JP., et al. Losartan, an AT1 antagonist, prevents aortic aneurysm in a mouse model of Marfan syndrome. *Science*. 312.5770 (2006):117-21.
33. Morissette, R., et al. Transforming Growth Factor- β and Inflammation in Vascular (Type IV) Ehlers-Danlos Syndrome. *Circ: Cardiovasc Genet*. 7.1 (2014):80-8.
34. Yeoh, YK., et al. Gut microbiota composition reflects disease severity and dysfunctional immune responses in patients with COVID-19. *Gut*. 70.4 (2021):698-706.
35. König, RS., et al. The gut microbiome in myalgic encephalomyelitis (ME)/chronic fatigue syndrome (CFS). *Front Immunol*. (2022):5616.
36. Strandwitz, P., et al. GABA-modulating bacteria of the human gut microbiota. *Nat Microbiol*. (2004): 396-403.
37. Pokusaeva, K., et al. GABA-producing *Bifidobacterium dentium* modulates visceral sensitivity in the intestine. *Neurogastroenterology & Motility*. 29.1 (2017):12904.
38. Ko, CY., et al. Gamma-aminobutyric acid production in black soybean milk by *Lactobacillus brevis* FPA 3709 and the antidepressant effect of the fermented product on a forced swimming rat model. *Process Biochem*. 48.4 (2013):559-68.
39. Mayengbam, S., et al. Dietary vitamin B6 deficiency impairs gut microbiota and host and microbial metabolites in rats. *Biomedicines*. 8.11 (2020):469.
40. Dev, S., et al. Suppression of histamine signaling by probiotic Lac-B: a possible mechanism of its anti-allergic effect. *J pharmacol sci*. 107.2 (2008):159-66.
41. Yu, X., et al. Wakefulness is governed by GABA and histamine cotransmission. *Neuron*. 87.1 (2015):164-78.
42. Jiménez-Jiménez, FJ., et al. Gamma-aminobutyric acid (GABA) receptors genes polymorphisms and risk for restless legs syndrome. *pharmacogenomics j*. 18.4 (2018):565-77.
43. Weinstock, LB., et al. Restless legs syndrome is associated with long-COVID in women. *J Clin Sleep Med*.18.5 (2022):1413-18.
44. Civelek, GM., et al. Evaluation of restless legs syndrome in fibromyalgia syndrome: an analysis of quality of sleep and life. *J Back Musculoskelet Rehabil*.27.4 (2014):537-44.
45. Dodson, C., et al. Restless legs syndrome is increased in postural orthostatic tachycardia syndrome. *J Clin Sleep Med*. 17.4 (2021):791-95.
46. Jammoul, M., et al. Investigating the possible mechanisms of autonomic dysfunction post-COVID-19. *Auton Neurosci*. (2022):103071.
47. Kaur, C., The circumventricular organs.
48. Gregory, MD., Nucleus of the solitary tract, medullary reflexes, and clinical implications.
49. Page, MC., et al. GABA in the paraventricular nucleus tonically suppresses baroreflex function: alterations during pregnancy. *Am J Physiol-Regul Integr Comp Physiol*.300.6 (2011):1452-58.
50. Haam, J., et al. GABA is excitatory in adult vasopressinergic neuroendocrine cells. *J Neurosci*. 32.2 (2012):572-82.
51. Young-Beom, Kim., et al. GABAergic inhibition is weakened or converted into excitation in the oxytocin and vasopressin neurons of the lactating rat. (2015).

52. Kakizawa, K., et al. A novel GABA-mediated corticotropin-releasing hormone secretory mechanism in the median eminence. *Sci adv.* 2.8(2016):1501723.
53. Moore, AM., et al. Mapping GABA and glutamate inputs to gonadotrophin-releasing hormone neurones in male and female mice. *J Neuroendocrinol.* (2018);30.12:12657.
54. Wiens, SC., et al. Thyroid hormone and γ -aminobutyric acid (GABA) interactions in neuroendocrine systems. *Comp Biochem Physiol A: Mol Integr Physiol.* 144.3 (2006):332-44.
55. McKinley, MJ., et al. The lamina terminalis and its role in fluid and electrolyte homeostasis. *J Clin Neurosci.* 6 (1999):289-301.
56. Miwa K. Down-regulation of renin-aldosterone and antidiuretic hormone systems in patients with myalgic encephalomyelitis/chronic fatigue syndrome. *J cardiol.* 69.4 (2017):684-88.
57. Pereira, G., et al. Acute corticotropin-releasing factor receptor type 2 agonism results in sustained symptom improvement in myalgic encephalomyelitis/chronic fatigue syndrome. *Front Syst Neurosci.* (2021):84.
58. Coffin, ST., et al. Desmopressin acutely decreases tachycardia and improves symptoms in the postural tachycardia syndrome. *Heart rhythm.* 9.9 (2012):1484-90.
59. Diep, PT., et al. Oxytocin, the panacea for long-COVID? a review. *Horm Mol Biol Clin Investig.* (2022);43.3:363-71.
60. Amir, S. Stimulation of the paraventricular nucleus with glutamate activates interscapular brown adipose tissue thermogenesis in rats. *Brain res.* 508.1 (1990):152-55.
61. Nikesjö, F., et al. Defining post-acute COVID-19 syndrome (PACS) by an epigenetic biosignature in peripheral blood mononuclear cells. *Clin Epigenetics.* 14.1 (2022):172.
62. Balnis, J., et al. Persistent blood DNA methylation changes one year after SARS-CoV-2 infection. *Clin Epigenetics.* 14.1 (2022):1-5.
63. Kalan, Sari., et al. Is Homocysteine Associated with the Prognosis of Covid-19 Pneumonia. *Int J Clin Pract.* (2023).
64. Waltz, E. Could long COVID be linked to herpes viruses? Early data offer a hint. *Nature.* (2022).
65. Huang, J., et al. Trimethylation of histone H3 lysine 4 by Set1 in the lytic infection of human herpes simplex virus 1. *J virol.* 80.12 (2006):5740-46.
66. De Benedetti F, et al Targeting interferon- γ in hyperinflammation: opportunities and challenges. *Nat Rev Rheumatol.* 17.11 (2021):678-91.
67. Varghese, J., et al. Persistent symptoms and lab abnormalities in patients who recovered from COVID-19. *Sci Rep.* 11.1 (2021):1-8.
68. Kuklina EM. T lymphocytes as targets for SARS-CoV-2. *Biochemistry.* 87.6 (2022):566-76. [Google Scholar] [Crossref]
69. Bossi, F., et al. Cross-talk between the complement and the kinin system in vascular permeability. *Immunol lett.* 140.2 (2011):7-13.
70. Ma, Q., et al. The effect of estrogen in coronavirus disease. *Am J Physiol-Lung Cell Mol Physiol.* 321.1 (2021):219-27.
71. Herrera, AY., et al. Estradiol therapy after menopause mitigates effects of stress on cortisol and working memory. *J Clin Endocrinol Metab.* 102.12 (2017):4457-66.
72. Stelzig, KE., et al. The Pathophysiology of COVID-19 and SARS-CoV-2 Infection: Estrogen regulates the expression of SARS-CoV-2 receptor ACE2 in differentiated airway epithelial cells. *Am J Physiol-Lung Cell Mol Physiol.* 318.6 (2020):1280.
73. Mendes, GM., et al. The des-Arg9-bradykinin/B1R axis: Hepatic damage in COVID-19. *Front Physiol.* 13 (2022):2652.
74. Oliveira, LC., et al. Interactions amongst inflammation, renin-angiotensin-aldosterone and kallikrein-kinin systems: suggestive approaches for COVID-19 therapy. *J Venom Anim Toxins incl Trop Dis.* (2021);27.
75. Thomas, RL., et al. Vitamin D metabolites and the gut microbiome in older men. *Nat commun.* 11.1 (2020):5997.
76. Wood, E., et al. Role of mitochondria, oxidative stress and the response to antioxidants in myalgic encephalomyelitis/chronic fatigue syndrome: a possible approach to SARS-CoV-2 'long-haulers'?. *Chronic dis transl med.* (2021):14-26.
77. Riera, JJ., et al. The micro-architecture of the cerebral cortex: functional neuroimaging models and metabolism. *Neuroimage.* 40.4 (2008):1436-59.
78. Koeva, Y., et al. Chapter Hydrohysteroid Dehydrogenases- Biological Role and Clinical Importance-Review.
79. Chambers, MD. Antioxidants and Long Covid. *Open Access Libr J.* (2022).
80. Depeint, F., et al. Mitochondrial function and toxicity: role of the B vitamin family on mitochondrial energy metabolism. *Chem-biol interact.* 163.1 (2006):94-112.
81. Azzini, E., et al. Homocysteine: its possible emerging role in at-risk population groups. *Int j mol sci.* 21.4 (2020):1421.
82. Hadtstein, F. Vitamin B-6-induced neuropathy: exploring the mechanisms of pyridoxine toxicity. *Adv Nutr.* 12.5 (2021):1911-1929.
83. Rose DP. The interactions between vitamin B6 and hormones. *Vitam Horm.* 36 (1979):53-99.
84. Sfera, A., et al. Neuronal and Non-Neuronal GABA in COVID-19: Relevance for Psychiatry. *Reports.* 5.2 (2022):22.
85. Campbell, DJ., et al. Effects of losartan on angiotensin and bradykinin peptides and angiotensin-converting enzyme. *J cardiovascular pharmacol.* 26.2 (1995):233-240.
86. Zaheer, J., et al. Correlation of ACE2 with RAS components after Losartan treatment in light of COVID-19. *Sci Rep.* 11.1 (2021):24397.
87. Kehoe, PG., et al. Angiotensin-converting enzyme 2 is reduced in Alzheimer's disease in association with increasing amyloid- β and tau pathology. *Alzheimer's res ther.* 8 (2016):1.
88. Chambers, P. Long Covid and Neurodegenerative Disease.

89. Yang, T., et al. The clinical value of cytokines in chronic fatigue syndrome. *J transl med.* 17.1 (2019):1-2.
90. Chambers, MD. Antioxidants and Long Covid. *Open Access Libr J.* (2022);9.
91. Zhang, Z., et al. Improved glucose-stimulated insulin secretion by selective intraislet inhibition of angiotensin II type 1 receptor expression in isolated islets of db/db mice. *Int j endocrinol.* (2013).
92. Chang, CH., et al. Different angiotensin receptor blockers and incidence of diabetes: a nationwide population-based cohort study. *Cardiovasc Diabetol.* 13.1 (2014):1-9.
93. Villapol S, Saavedra JM. Neuroprotective effects of angiotensin receptor blockers. *Am j hypertens.* 28.3 (2015):289-299.
94. Hoffman, LB., et al. Less Alzheimer disease neuropathology in medicated hypertensive than nonhypertensive persons. *Neurology.* 72.20 (2009):1720-1726.
95. Van, Dalen., et al. Association of angiotensin II-stimulating antihypertensive use and dementia risk: post hoc analysis of the PreDIVA trial. *Neurology.* 96.1 (2021):67-80.
96. Arvin, AM., et al. Varicella-zoster virus: aspects of pathogenesis and host response to natural infection and varicella vaccine. *Adv virus res.* 46 (1996):263-309.
97. Hasan, T., et al. Disturbed homocysteine metabolism is associated with cancer. *Exp mol med.* 51.2 (2019):1-3.
98. Chan, KA., et al. INAUGURAL ARTICLE by a Recently Elected Academy Member: Noninvasive detection of cancer-associated genome-wide hypomethylation and copy number aberrations by plasma DNA bisulfite sequencing. *Proc Natl Acad Sci U. S. A.* 110.47 (2013):18761.