

## The Influence of Demographic Factors on Ghanaian University Students' Perception of Barriers to Health/Mental Healthcare

Evelyn Ekua Bentil<sup>1,2\*</sup> and Danquah SA<sup>2,3</sup>

<sup>1</sup>The Guidance and Counseling Department, Accra Polytechnic, Accra, Ghana

<sup>2</sup>Psychology Department, University of Ghana, Legon, Accra, Ghana

<sup>3</sup>Methodist University, Accra, Ghana

### Abstract

The aim of the study was to examine the influence of demographic variables on perceived barriers to accessing health/mental healthcare. The population was students who had enrolled into various universities in the Republic of Ghana. Participants were selected based on their convenient accessibility. A validated instrument, the thirty-nine item Barriers to Care Questionnaire, (BCQ) was used to gather data for this study. In addition, a demographic information sheet was used to assess basic demographic information of the participants. The results indicated that the age of respondents influenced their reports on barriers to receiving health/mental healthcare services although it was not evident that the gender, the marital status and the religious affiliation of the participants influenced their perceived barriers to health/mental healthcare. The limitations and implications of the study are then discussed. Areas for further research are also recommended.

**Keywords:** Barriers; Healthcare; Mental; Students

### Introduction

Timely receipt of health/mental healthcare can determine an individual's health outcome [1,2] however, many students in tertiary institutions in Ghana do not utilise available health/mental healthcare services. A greater proportion of these students continue to experience some barriers in receiving health/mental healthcare. Barriers to health/mental healthcare are issues that hinder a person from accessing health/mental healthcare services. These factors could be physical, psychological or geographical in nature [3]. They could also be linked to resources, culture or language. Persons may face more than one barrier to accessing services. Barriers to care have been identified at the provider, the patient level as well as the system level [4]. Studies into barriers to the utilisation of health/mental health care services have revealed that there could be real or perceived barriers to care. The most basic barrier to receiving health/mental healthcare services is the denial that a problem exists. Several factors may account for the inconsistency between the need for therapy and the actual utilisation of health/mental health services.

Known barriers to care from literature include the fear of negative consequences of treatment, privacy issues the shame/humiliation associated with seeking treatment [5], the mistrust of the health/mental healthcare system [6], the characteristics of the therapist [7], the issue of self-reliance being unaware of available services or how to access them [8], financial constraints lack of perceived need/scepticism about effectiveness of the health/mental healthcare system [9] and the issue of stigma [10-12].

There has also been some research into the possibility of demographic factors to act as barriers to health/mental healthcare. These factors which have been studied include, gender, marital status, religious affiliation, age, among others [13].

An extensive body of literature has revealed gender differences in perceived barriers to health/mental healthcare [14]. It is evident from literature that the main health related problem males face is their reluctance in receiving health/mental health treatment [15]. Studies into barriers to care have specified that males often report more barriers to receiving health/mental healthcare than their female counterparts [16]. Research has indicated that male socialisation could have an

adverse effect on men's health in that it affects their perceived barriers to care and mostly discourages them from seeking health/mental health care [17,18]. Furthermore, unlike females, males have been identified as non-regular attendees even for preventive health/mental healthcare (NHS, Executive, 1998). Other studies, on the contrary, have suggested no significant gender differences in perceived barriers to health/mental healthcare and have explained male's reluctance to receiving health/mental healthcare services as merely due to factors related to their career and lifestyle [19].

Findings from research have suggested age differences in perceived barriers to health/mental healthcare services [20]. It is evident from literature that the elderly often report more barriers to health/mental healthcare than the young [21]. In a research, older participants specified that it was more damaging to visit a psychiatrist for a condition like depression than to consult other practitioners [22].

Conversely, some findings have emerged from research which points to the fact that older adults have more positive mindset towards seeking health/mental healthcare than younger adults [23,24]. The explanation given for young people's reluctance to utilising health/mental healthcare services was that predominantly they are resilient and react positively to stressful life circumstances that older people react to negatively [25]. Hence, some young people cope well all by themselves in times of trouble to the extent that they never seem to have a problem.

Research which has been conducted to investigate the influence of demographic factors on the utilisation of health/mental healthcare services has revealed that married people have the tendency of reporting

\*Corresponding author: Bentil Evelyn E, The Guidance and Counseling Department, Accra Polytechnic, Accra, Ghana, E-mail: [Lynnevebentil@hotmail.com](mailto:Lynnevebentil@hotmail.com)

Received: November 06, 2015; Accepted: November 09, 2015; Published: December 20, 2015

Citation: Bentil EE, Danquah SA (2015) The Influence of Demographic Factors on Ghanaian University Students' Perception of Barriers to Health/Mental Healthcare. Clin Exp Psychol 2: 108. doi:10.4172/2471-2701.1000108

Copyright: © 2015 Bentil EE, et al. This is an open-access article distributed under the terms of the Creative Commons Attribution License, which permits unrestricted use, distribution, and reproduction in any medium, provided the original author and source are credited.

more barriers to psychological treatment than their single counterparts [26,27]. Nonetheless, other studies have specified that single people report more barriers to receiving health/mental healthcare services than the married [28].

Other studies on the other hand, have indicated that one's marital status is not linked in any way to one's perceived barriers to health/mental healthcare.

Religion has often been viewed as a barrier to professional health/mental healthcare services. To the Ghanaian/African, life is perceived as religion, and religion perceived as life. In other words religion and life are inseparable. Religion influences several aspects of one's life including access to health/mental healthcare services. It affects the perception and the explanations for health and illness as well as the behavioural options to promote health or relieve suffering. The choice of treatment by the patient therefore is related to the patient's concept of the aetiology of the illness, which is usually based on one's spiritual beliefs.

Studies have indicated that most Ghanaians attribute the cause of illness to the supernatural. There is therefore the belief that an illness can only be cured by applying the appropriate magic/religious method. As a result of this, some Ghanaians visit their religious leaders with both physical and psychological conditions and resort to formal health/mental healthcare services when the condition deteriorates and there is no sign of it improving [8]. Hence religion could be a barrier to the utilisation of health/mental healthcare services.

Barriers to health/mental healthcare have been identified at various levels [4]. These include barriers at the patient level, barriers at the provider level and barriers at the system level. Identified barriers at the patient level include the predisposing characteristics of a patient, an individual's personal enabling resources and some community enabling resources. Predisposing characteristics like a person's demographic factors, economic status and living conditions could act as barriers to care at the patient's level. An individual's personal enabling resources (for example, one's income, the possession of health insurance, knowledge of available health services and how to use them and time constraints) have also been identified as capable of acting as barriers to care at the patient level. Community enabling resources (for instance, transportation issues and time involved in travelling to the source of help) have been identified as barriers to care at the patient level.

Barriers at the provider level include the characteristics of the service provider which discourages people from utilising health/mental healthcare services [8]. These factors include the service provider's orientation, the provider's skills, behaviour, communication style, bilingualism, translation cultural knowledge, family involvement, religion/spirituality and parallel sets of belief and practices.

Barriers to health/mental healthcare which have been reported in relation to issues at the system level have to do with the medical paradigm, consumer approach, working hours, waiting time, and treatment mode. The problem statement is that most students in Ghana find it difficult to utilise healthcare services especially when it has to do with mental health. Some delay the onset of treatment until the condition deteriorates and affect their education. Others end up as drop-outs as a result of this. There was the need to identify which groups of people report the most barriers to health/mental healthcare so that interventions could be instituted to encourage them receive such services with an open mind. The rationale for the study is that researches into barriers to health/mental healthcare have mostly been

conducted in the Western countries. Findings from these studies have failed to adequately explain barriers to care among Ghanaian university students in terms of gender, age, marital status and religious affiliation. This necessitated that a research be conducted to investigate the above phenomenon.

### Research questions

- What are the barriers to the utilisation of health/mental healthcare services?
- Can socio-demographic characteristics influence the perception of what constitutes barriers to care?

### Purpose of the study

This study intended to investigate the influence of demographic variables like age, gender, marital status and religious affiliation on the perception of some selected university students as to what constitutes barriers to the utilisation of health/mental healthcare system. The significance of the study lies in the fact that the outcome has unearthed barriers to care from which measures will be instituted in order to attract people to utilise various health/mental health services.

### Objectives of the study

This study aimed to investigate the influence of demographic variables on perceived barriers to utilising health/mental healthcare. The ultimate goal was to identify which groups of people report the most barriers to care in order to target them when programmes and interventions are being designed to address barriers to care.

### Literature Review

Several articles and papers on barriers to care were reviewed. The main search engines used were PubMed, Psychlit, PsychINFO, APAPsycNET, Medline and the Cochrane Library. Some of the keywords entered into these search engines included, "health care," "mental health care" and "barriers to care." Some write ups which have been presented at conferences, journals and books were also read.

### Theoretical framework

The Health Belief Model (HBM) is a psychological model which was developed in the 1950's by Rosenstock and others [29]. This model attempts to explain and predict health behaviours. This model explains the values that are assigned to maintaining wellness or seeking therapy when a person is ill and also describes a person's beliefs about the effect of taking action to seek health [30]. HBM attempts to explain and predict health behaviours in terms of value-expectancy. The notion of value-expectancy stems from cognitive theorists such as Kurt Lewin, who speculated that behavior can be understood when the value a person places on a particular outcome is known as well as the likelihood or the expectation that the behaviour would result in the desired outcome. The core assumptions of this model is that an individual will take a health-related action if he/she is of the opinion that a negative health condition could be avoided, or if that individual has a positive expectation that by adhering to the recommended action, he/she will avoid a negative health condition and also believes that he/she can successfully follow a recommended health action.

Initially, the HBM depicted four components which represented the perceived threats and the net benefits of a person's readiness to act when ill. These components were: perceived susceptibility; perceived severity; perceived benefits and perceived barriers. Under perceived susceptibility, a person must perceive that he/she is at risk of the

health problem and its negative consequences. The degree of perceived severity must be high enough to motivate a person to seek help [25]. For a person to seek help and adhere to the treatment regime, he/she must perceive that the outcome of the treatment will be positive and helpful. As part of the decision-making process, he/she also considers possible barriers to seeking healthcare and also considers the pros and cons of seeking health in a cost-benefit analysis.

Two other components were later added to this model, which are ‘cues to action’ and ‘self-efficacy’. The HBM states that before the person decides to seek treatment or otherwise, he/she would take so many things into consideration which will be cues to actions. A person’s confidence in successfully executing an action even with the presence of barriers is self-efficacy.

### Related literature

Linos studied the predictors of help seeking behaviour among women who had been exposed to physical and sexual violence in Nigeria and realised that barriers/facilitators to care included wealth, marital status, employment status, ethnicity, history of witnessing domestic violence and relationship to perpetrator. The researchers used self reports in collecting data. It is possible that the participants gave socially desirable answers. This could have confounded the outcome of their study.

In a study conducted by [31] into perceived barriers to psychological treatment and their relationship to depression, it was found out that in general, there were no gender differences on perceived barriers to psychological treatment though women indicated greater barriers regarding the cost of treatment. Also, participants who were single reported greater perceived barriers to psychological treatment than their married counterparts in terms of stigma, lack of motivation, negative evaluation of therapy, participant restriction and cost of treatment. The age of the participants was related to reports on barriers to psychological treatment with regard to stigma, emotional concerns, negative evaluation of therapy and time constraints.

### Statement of hypotheses

- Hypothesis 1: Males will report more barriers to the utilisation of health/mental healthcare than females.
- Hypothesis 2: Older participants will report greater barriers to care than their younger Counterparts.
- Hypothesis 3: Participants’ marital status will affect their perceived barriers to health/mental healthcare.
- Hypothesis 4: Respondents’ religious affiliation will influence their perceived barriers to the utilisation of health/mental healthcare.

### Materials and Methods

#### Sample/population

The population for this study were students who had been enrolled into various universities in the Republic of Ghana. The study utilised a non-probability, convenience sampling method to recruit participants. Participants were selected based on their convenient accessibility. The country (Ghana) was divided into two clusters; southern and northern clusters. The northern sector included universities in the Northern Region, the Brong Ahafo Region and the Ashanti Region. The southern sector constituted universities in the Central Region, the Greater Accra Region, the Western Region and the Volta Region. The study sample was selected from both the northern and the southern sectors of Ghana. These include the University of Cape Coast, the University of Ghana,

Legon, and the Catholic University College of Ghana. One hundred and ninety eight (198) out of the 250 questionnaires distributed were returned, giving this survey a return rate was 79.2%. However, 192 questionnaires were complete. A summary of the demographic characteristics of the participants is presented in Table 1.

From Table 1, as many as 137 (71.4%) of the respondents were 25 years or below while 55 (28.6%) were above 25 years. The age range was between 18 years and 36 years with a mean age of 21 years. With regard to respondents’ marital status (Table 1), 20 (10.4%) were married, 159 (82.2%) were single. The group of respondents who were cohabiting was 6.8% (13). As many as 170 (88.5%) were Christians while 22 (11.5%) were either Muslims or affiliated to other religion. As shown in Table 1, the percentage of respondents pursuing a diploma course was 2.1% (4). Respondents reading undergraduate courses at the first degree level constituted 96.9% (186) of the total sample whereas the percentage of those reading a second degree was 1% (2).

### Research design

This study is a survey into barriers to health/mental health care services as reported by students who have enrolled into universities in Ghana. Questionnaires were sent out to be filled by respondents.

### Measures

A validated instrument was used to gather data for this study. Barriers to health/mental healthcare were measured with the thirty-nine item Barriers to Care Questionnaire (39-Item [1]). In addition to this instrument, a demographic information sheet was used to assess basic demographic information of the participants. This information included, gender, age, course being pursued at the university, marital status, and religion. The 39-item BCQ yields scores from zero (0) to (100). Each item is scored with 100 for “No Problem” or 75 for “Small Problem” or 50 for “Problem” or 25 for “Big Problem” and 0 for “Very Big Problem.” Hence, for BCQ, higher scores indicate fewer barriers. The 39-item BCQ also has subscales which ask questions about issues regarding pragmatics, skills, marginalisation, expectations about care, and health knowledge and beliefs.

### Pilot testing of research instruments

The 39-item BCQ was developed and used in a culture/setting other than the Ghanaian setting. This warranted that this instrument be pilot tested using students from two tertiary institutions in Ghana in order to yield its psychometric properties. Eighty questionnaires were administered out of which sixty three (63) were retrieved. The reliability coefficient for the 39-item BCQ was also calculated as a single scale and for its subscales as well. A summary of the reliabilities are presented in Table 2.

From Table 2, the Cronbach alpha value of the 39-item BCQ as a single scale was .925. The obtained Cronbach alpha values for the subscales ranged from .693 to .890 depicting a satisfactory level of reliability.

### Study area

This study was conducted in three selected tertiary institutions in the Republic of Ghana. These institutions included two universities and one university college. Two of the institutions were situated within the southern sector of Ghana while the other one was within the northern sector.

### Data collection/procedure

After a respondent’s consent had been sought and confidentiality

Variables	Levels	N	%	Range	Mean	Std Dev	SE Mean
Gender	Males	112	58.3	18-36 yrs	21 yrs	.45329	.01750
	Females	80	41.7				
Total	192	100					
Age	25 yrs or below	137	71.4				
	Above 25 yrs	55	28.6				
Total	192	100					
Religion	Christian	170	88.5				
	Muslim & Others	22	11.5				
Total	192	100					
Marital Status	Married	20	10.4				
	Single	159	82.8				
	Cohabiting	13	6.8				
Total	192	100					
Education	Diploma	4	2.1				
	First Degree	186	96.9				
	Second Degree	2	1				
Total	192	100					

Table 1: Summary of the Demographic Characteristics of the Study's Participants.

Instrument	Scale Type	Mean	Std. Dev	SE Mean	N	Reliability
39-Item BCQ						
As a single scale		59.1935	23.9267	3.01448	63	.925
Subscales:						
Pragmatics		16.3175	6.65225	0.87374	63	.693
Skills		16.2540	6.93511	0.87374	63	.755
Expectation		8.2097	4.12166	0.51928	63	.750
Marginalisation		8.5079	5.08595	0.64077	63	.890
Knowledge & Belief		10.1587	6.24553	0.78686	63	.825

Table 2: A Summary of the Psychometric Properties of the 39-item BCQ.

had been assured, a set of questionnaires and a token (a pen or a packet of tissue) were given to him or her. The questionnaires were randomly presented to the participants.

### Data analysis

The Version 17 of the Statistical Package for the Social Sciences (SPSS v 17.0) was used to analyse the data after which appropriate statistical tests were used to test each hypothesis. Hypothesis 1, 2 and 4 were subjected to the Mann-Whitney (*U*) test while Hypothesis 3 was tested with the Kruskal-Wallis One Way Analysis of Variance by Ranks (*H* test). Prior to the analysis, the questionnaires were checked to ensure that they had been completed.

### Ethical consideration

Ethical issues relating to research were strictly adhered to. Using American Psychological Association's (APA) ethical code as guideline,

permission was sought from several institutions, people and individuals who were directly or indirectly involved in the study. An email was sent to the author of the 39-item BCQ to seek his permission to use it for this study before it was pilot tested and subsequently used for the study. In addition, permission was sought from the necessary authorities in various institutions before the questionnaires were administered to their students. Anonymity and confidentiality of respondents were ensured. No respondent was maltreated in any way. All literature sources that were consulted and used for the study have been duly acknowledged.

### Results

Results from the study indicated that in the past three months prior to the study, 35 (18.2%) respondents reported that the health/mental healthcare system had never worked for them. Twenty six (13.5%), respondents also indicated that health/mental healthcare system had almost never worked for them. To seventy-two (37.5%) of the respondents the health/mental health care system had sometimes worked for them. Whilst 34 (17.7%) and 25 (13.1%) of the respondents reported that the health/mental health care system had often and almost always worked for them respectively. This is shown in Table 3.

In terms of reports on barriers to care, 26 (13.5%) of the sample reported virtually no barriers to care, whilst 67 (34.9%) reported very few barriers. Few barriers to care were also reported by 81 (42.2%) of the sample and respondents reporting some barriers to care and many barriers to care were 16 (8.3%) and 2 (1.1%) respectively. These figures are depicted in Table 4.

The BCQ has five subscales: Pragmatics, Health Beliefs, Expectation, Skills and Marginalisation subscales. The respondents reported more barriers to care on the Expectation subscale than on the other four subscales. In other words more respondents were of the opinion that the health/mental healthcare system did not meet up to their expectation in the past three months prior to the day the data was collected. Apart from the Skills subscale of the 39-item BCQ, male respondents reported more barriers to care than female respondents on the other subscales like the Pragmatics, Health Beliefs, Expectation and Marginalisation subscales. However for the single scale, the female respondents reported more barriers to care than their male counterparts.

Respondents who were above 25 years old reported more barriers to care than those who were 25 years or below for the single scale as well as for all the subscales. Married respondents reported more barriers to care than their other counterparts for the single scale and all the subscales. For religious affiliation, the Muslim/Other Religion respondents reported more barriers to care on the single scale as well as on all the subscales. Table 5 depicts the means and standard deviation of the response for the 39-item BCQ single scale and its subscales according to the demographic factors.

### Hypotheses testing

#### Hypothesis 1: Males will report more barriers to the utilisation of health/mental healthcare than females

Hypothesis 1 sought to investigate the influence of gender on reports on barriers to the utilisation of health/mental health care. The data collected was analysed with the aid of the SPSS software. The means and standard deviations (from the SPSS output) are shown in Table 6. The data in Table 6 was further subjected to the Mann-Whitney (*U*) Test. The Mann-Whitney (*U*) Test was chosen as the statistical test for this hypothesis because it involved a single independent variable (gender) with two levels (males and females). These two levels of the independent variable had two groups of respondents. Respondents' scores on the 39-item BCQ constituted the dependent variable for this

How often the health/mental healthcare system had worked well in the past 3 months	Frequency	%
Almost always	25	13.1
Often	34	17.7
Sometimes	72	37.5
Almost never	26	13.5
Never	35	18.2
Total	192	100

**Table 3:** A Summary of responses on how often the health/mental healthcare system had worked well.

Reported Barriers to Care	Score Range	Frequency	%
Virtually No Barriers	81-100	26	13.5
Very Few Barriers	61-80	67	34.9
Few Barriers	41-60	81	42.2
Some Barriers	21-40	16	8.3
Many Barriers	0-20	2	1.1
Total	-	192	100

**Table 4:** A Summary of Reports on Barriers to Care.

data. A summary table of the Mann-Whitney (*U*) Test (derived from the SPSS output) is presented in Table 7. The SPSS output indicated that the observed differences between the group ranks for males and females in terms of their scores on the BCQ were not statistically significant ( $N = 192, U = -1.29, p = n.s.$ ). In other words, though the male respondents reported more barriers to care than the female respondents the differences were not significant. This finding is consistent with the findings of [32] whose research into barriers to care indicated that generally there were no gender differences on perceived barriers to psychological treatment. This study's finding is however dissonant with that of [33] which indicated that gender had an influence on perceived barriers to care.

**Hypothesis 2: Older participants will report greater barriers to care than their younger counterparts:** The purpose of Hypothesis 2 was to observe if age will have an effect on perceived barriers to care. The means and standard deviations (extracted from the SPSS output) are presented in Table 8.

The Mann-Whitney (*U*) Test was adopted to test the data contained in Table 8. A summary table of the Mann-Whitney (*U*) Test (obtained from the SPSS output) is presented in Table 9.

The observed Mann Whitney value from the SPSS output indicated that the differences between respondents who were above 25 years and those who were 25 years or below in terms of their scores on the 39-item BCQ were statistically significant ( $N = 192, U = -1.644, p = 0.05$  (one tailed)). Respondents who were above 25 years old reported more barriers to the utilisation of health/mental healthcare than those who were 25 years and below. This finding is in harmony with the findings of [21] which specified that among other demographic factors, age could possibly have an impact on reports on barriers to care. This

finding is also congruent with the outcome of a study on refugees conducted by [28] which revealed that older participants were more likely to report more barriers to care than their younger participants. However, the finding from this study contradicts that from a study done on the influence of age on the utilisation of mental health services which revealed that older adults had more positive mindset towards the utilisation of health/mental healthcare services than younger adults [34].

There was the need to determine which of the subscales depicted significant age differences in perceived barriers to health/mental healthcare. Thus, an analysis was done on scores for the various subscales in relation to the age of the participants. The observed Mann Whitney (*U*) value from the SPSS output is shown in Table 10 below.

Table 10 portrays that the observed differences between participants who were 25 years old and below and those who were above 25 years were significant for the pragmatic subscale ( $N = 192, U = -3.174, p = 0.001$  for a one tailed test), the Health Beliefs subscale ( $N = 192, U = -1.884, p = 0.03$  for a one tailed test), and the Marginalisation subscale [ $N=192, U = -2.78, p = .0025$ ]. These results indicated that participants who were 25 years and below differed significantly from those who were above 25 years in their perceived barriers to care as far as issues of pragmatics, their beliefs about the health/mental health care system and marginalisation issues were concerned. In general, as people transition from childhood to adulthood they develop a belief system. Belief system is difficult to change for older people than for younger people. Possibly the respondents who were above 25 years reported more barriers to health/mental health care because their opinions might have already been developed for health/mental healthcare. This might have accounted for their high perceived barriers with regards to pragmatics, health beliefs and marginalisation.

The observed *U* values were however not significant for the Skills subscale ( $N = 192, U = -1.147, p = n.s.$ ) and for the Expectation subscale ( $N = 192, U = -2.784, p = n.s.$ ). The scores of the participants who were 25 years and below and those who were above 25 years did not differ statistically.

**Hypothesis 3: Participants' marital status will affect their perceived barriers to mental healthcare:** Hypothesis 3 was to examine the effect of marital status on reports on barriers to care. The means and standard deviations (extracted from the SPSS output) are shown in Table 11. The data in Table 11 was further subjected to the Kruskal-Wallis One Way Analysis of Variance by Ranks (H) Test). This was chosen to test this hypothesis, the reason being that the independent variable (marital status) had three levels (which were married respondents, single respondents and cohabiting respondents). The dependent variable comprised scores from the the 39-item BCQ. A summary table of the Kruskal-Wallis One Way Analysis of Variance by Ranks (H Test (drawn from the SPSS output) is presented in Table 12.

The Kruskal-Wallis One Way Analysis of Variance by Ranks (H) test indicated that the marital status of the participants did not affect their perceived barriers to health/mental healthcare ( $N = 192, H_{(2)} = 3.707, p = n.s.$ ). The differences in the mean ranks for the various marital groups were not statistically significant. This finding is in harmony with the findings of [28], whose study concluded that some demographic factors including the marital status of respondents were not significantly related to barriers to seeking health/mental healthcare. This finding is however contradictory to the findings of [26] and [35] which suggested that barriers/facilitators to care included the marital

	Single Scale		Pragmatics		Health Beliefs		Skills		Expectation		Marginalisation	
	Mean	SD	Mean	SD	Mean	SD	Mean	SD	Mean	SD	Mean	SD
<b>Gender</b>												
Females (N=80)	61.25	18.18	63.81	1.98	61.41	20.03	59.28	2.25	56.40	23.82	70.86	22.42
Males(N=112)	61.29	17.38	62.87	2.03	59.94	19.35	61.48	2.32	56.71	24.25	65.30	24.59
Total (N=192)	61.27	17.67	63.26	2.01	60.55	19.60	60.56	2.29	56.58	24.01	67.61	23.81
<b>Age</b>												
Above 25 yrs(N=55)	57.78	17.14	55.91	1.97	56.29	18.56	56.80	2.17	51.35	22.66	59.76	24.23
25 yrs & below(N=137)	62.67	17.75	66.21	1.95	62.26	19.81	62.07	2.32	58.68	24.30	70.77	22.98
Total (N=192)	61.27	17.67	63.26	2.01	60.55	19.60	60.56	2.29	56.58	24.01	67.61	23.81
<b>Religion</b>												
Christian(N=170)	61.37	18.11	63.42	2.03	60.94	19.90	61.51	2.32	56.66	24.88	68.24	24.17
Muslim/others(N=22)	60.50	14.12	62.05	1.84	57.50	17.25	53.23	1.95	55.91	16.19	62.81	20.71
Total(N=192)	61.27	17.67	63.26	2.01	60.55	19.60	60.56	2.29	56.58	24.01	67.61	23.81
<b>Marital Status</b>												
Married (N=20)	53.45	19.28	52.25	2.32	54.20	20.97	51.90	2.26	46.40	24.28	51.15	25.69
Single(N=159)	61.93	16.67	64.52	1.90	61.18	18.96	61.42	2.20	57.23	23.22	69.89	22.25
Cohabiting(N=13)	65.23	24.42	63.26	2.01	60.55	19.60	60.56	2.29	56.58	24.01	65.23	30.58
Total (N=192)	61.27	17.67	63.26	2.01	60.55	19.60	60.56	2.29	56.58	24.01	67.61	23.81

**Table 5:** Means and standard deviation according to the demographic breakdown for scores on the 39-item BCQ as a single scale and for the subscales.

Gender	Mean Score	Std. Dev.	Sample Size (n)
Male	61.2857	17.37837	112
Female	61.2500	18.18227	80
Grand Mean & Grand Std. Dev.	61.2708	17.67062	192

**Table 6:** Means and Standard Deviation of scores on the 39-Item BCQ in terms of gender.

status of an individual.

**Hypothesis 4: Respondents' religious affiliation will influence their perceived barriers to the utilisation of health/mental healthcare:** The purpose of Hypothesis 4 was to uncover whether reports on barriers to health/mental health care would differ based on a participant's religious affiliation. The means and standard deviations (obtained from the SPSS output) are shown in Table 13. The data in Table 13 was further analysed with the Mann-Whitney (U) test.

A summary table of the Mann-Whitney (U) Test (derived from the SPSS output) is presented in Table 14. The Mann-Whitney (U) test indicated that the religious affiliation of the participants did not affect their scores on perceived barriers to care (N= 192,  $U = -.326, p = n.s.$ ). The differences in the mean ranks for the various religious groups were not statistically significant. This finding is however not consistent with that of [8,36,4] which depicted that religion could influence one's perception of what constitutes barriers to health/mental healthcare. The sample size for the Muslim/other religious group was smaller than that for Christians. This probably, might have accounted for this discrepancy in findings. Also, the inconsistency in findings could have also arisen from the non probability sampling technique used in recruiting respondents for this study. Probably, a simple random sampling could have yielded results which would have been more consistent with previous findings. A diagram depicting the findings from the study is shown in Figure 1.

## Summary/Conclusion

Group	Males (N = 112)	Females (N = 80)	U value	p (level of Significance)
Mean rank	96.06	97.11		
Sum of ranks	10759.00	7769.00	$U = -.129$	$P = n.s$

**Table 7:** A Summary Table of the Mann-Whitney (U) Test Performed on the Data Contained in Table 6.

Age	Mean Score	Std. Dev.	Sample Size (n)
25 Years and Below	62.6715	17.74953	137
Above 25 Years	57.7818	17.13529	55
Grand Mean & Grand Std. Dev.	61.2708	17.67062	192

**Table 8:** Means and Standard Deviation of scores on the 39-Item BCQ in relation to age.

Group	25 Yrs & Below (N = 137)	Above 25 Yrs (N = 55)	U value	p (level of Significance)
Mean Rank	100.68	86.1		
Sum of Ranks	13792.50	4735.50	$U = -1.644$	$P = 0.05$

**Table 9:** A Summary Table of the Mann-Whitney (U) Test Performed on the Data Presented in Table 8.

Majority of the respondents reported that while the health/mental health care system had sometimes worked satisfactorily for them it had at other times failed them. In general, participants reported more barriers to care on the Expectation subscale than on the other four subscales. Using the Mann Whitney (U) test, the age of respondents influenced their reports on barriers to receiving health/mental healthcare services though it was not apparent from the Mann-Whitney (U) test that the gender and the religious affiliation of participants influenced perceived barriers to health/mental healthcare. Results from the Kruskal Wallis one way analysis of variance also indicated that the respondents' marital status did not affect their reports on barriers to utilising health/mental

Scale	Age	Mean Rank	Sum of Ranks	Z	p (level of Significance)
Pragmatics	25 yrs & Below	104.55	14324	-3.174	.001
	Above 25 yrs	76.44	4204		
Health Beliefs	25 yrs & Below	101.28	13875	-1.883	.03
	Above 25 yrs	84.60	4653		
Skills	25 yrs & Below	99.41	13619	-1.147	p = ns
	Above 25 yrs	89.24	4909		
Expectation	25 yrs & Below	100.34	13746	-1.513	p = ns
	Above 25 yrs	86.95	4782		
Marginalisation	25 yrs & Below	103.54	14185	-2.784	.0025
	Above 25 yrs	78.96	4343		

**Table 10:** A Summary Table of the Mann-Whitney (U) Test Performed on the various subscales in relation to age

Marital Status	Mean Score	Std. Dev.	Sample Size (n)
Married	53.45	19.28314	20
Single	61.93	16.67262	159
Cohabiting	65.23	24.42387	13
Grand Mean & Grand Std. Dev.	61.27	17.67062	192

**Table 11:** Means and Standard Deviation of Scores on BCQ in relation to marital status.

Marital Status	Mean Rank	Df	H	p (level of Significance)
Married	74.00	2	3.707	p = ns
Separated	87.98			
Cohabiting	102.5			

**Table 12:** A Summary Table of the Kruskal-Wallis One Way Analysis of Variance by Ranks (H Test) Computed on the Data Presented in Table 11.

Religion	Mean Score	Std. Dev.	Sample Size (n)
Christian	61.3706	18.11169	170
Muslim & Others	60.5000	14.12108	22
Grand Mean & Grand Std. Dev.	61.2708	17.67062	192

**Table 13:** Means and Standard Deviation of Scores on BCQ in relation with religious affiliation.

healthcare.

## Recommendations from the Study

This study used convenience sampling technique to select participants. To strengthen the methodology, the researcher recommends that the study is replicated using random sampling technique to select participants. In addition, the researcher recommends the use of a larger sample. In analysing such data, it is recommended that for future studies, the hypotheses should be tested with parametric tests since they are more powerful than the non-parametric tests used for this study.

## Contribution to Knowledge

This study is a significant contribution to previous knowledge and

Group	Christians (N = 170)	Muslims & Other (N = 22)	U value	p (level of Significance)
Mean Rank	96.97	92.86	U = -326	P = n.s.
Sum of Ranks	16485.00	2043.00		

**Table 14:** A Summary Table of the Mann-Whitney (U) Test Performed on the Data Presented in Table 13.

understanding of barriers to seeking health/mental healthcare. This study detected age differentials in perceived barriers to care which is a pertinent finding which could guide mental healthcare/healthcare workers to strategize in order to increase services utilisation. Also, emerging from the study, was the fact that there was no significant gender differences in perceived barriers to care, neither was there a significant difference in reports on perceived barriers to care among the different religious affiliation groups nor the different marital status groups. What this demonstrates is that one's age rather than other predisposing factors could be a major determinant of the nature and types of psychological support one may need. If only heads of health institutions/policy makers could put this finding into consideration, they could promote the utilisation of health/mental health services.

## Implications from the Study

The findings from the present study have enormous implications for clinical practice, counselling services, research, mental health policy, and educational institutions. For clinical practice and school counsellors this study provides significant information on perceived barriers to seeking health/mental health services as far as demographic variables are concerned. When addressing barriers to the utilisation of psychological treatment, clinicians/counsellors should target the elderly and develop interventions accordingly. This study also has implications for research. Findings from this study have increased knowledge on the existing knowledge of perceived barriers to health/mental healthcare. Some of the findings would pave way for others to research into help seeking behaviour. This study also has implications for mental health policies. Findings from this study suggest that new policies on mental health should consider age differentials in order to make mental health services available, accessible, acceptable, affordable and friendly to the elderly.

## Limitation of the Study

This study used the non-probability sampling method to recruit its respondents instead of simple random sampling. This probably could have affected the outcome of the study.

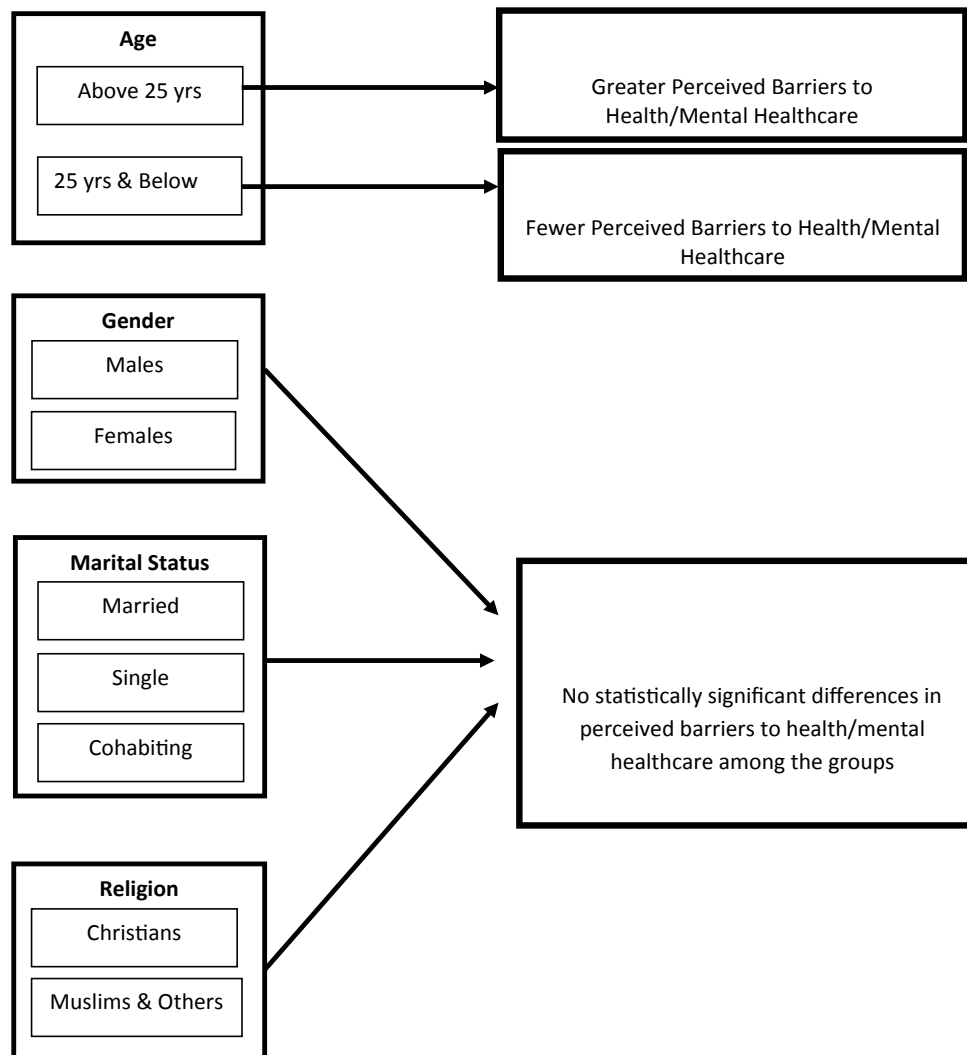
## Suggested Areas for Future Research

The following areas are recommended to be studied for future research:

- Studies to investigate perceived barriers to health/mental healthcare among senior high secondary school students in Ghana, and
- Studies into religion as a barrier to psychological help seeking.

## Acknowledgement

May God's name be praised for the successful completion of this research. The authors gratefully acknowledge analytical inputs to this study made by Prof. J. Y. Opoku and Dr. B. Amponsah both of the Department of Psychology, University of Ghana, Legon. Alexander Ebo B. Okyere-Boateng, God bless you for your patience. Special appreciation goes to the participating institutions and the



**Figure 1:** A diagram depicting the major findings from the study.

respondents. Thank you all for your help and support.

## References

- Seid M, Sobo EJ, Gelhard LR, Varni JW (2004) Parents' reports of barriers to care for children with special health care needs: development and validation of The Barriers to Care Questionnaire. *Ambulatory Paediatrics* 4: 323-331.
- Ayanian JZ, Kohler BA, Abe T, Epstein A M (1993) The relation between health insurance coverage and clinical outcomes among women with breast cancer. *N Engl J Med* 329: 326-331.
- Lee C, Owens R G (2002) *The Psychology of men's health*. Open University Press, Buckingham.
- Scheppers E, Dongen EV, Dekker J, Geertzen J, Dekker J (2006) Potential barriers to the use of health services among ethnic minorities: A Review. *Family Practice* 23:325-348.
- Dieppe P, Basler HD, Chard J, Croft P, Dixon J, et al. (1999) Knee replacement surgery for osteoarthritis: Effectiveness, practice variation, indications and possible determinants of utilisation. *Rheumatology* 38: 73-83.
- Donnelly PL (2005) Mental health beliefs and help seeking behaviours of Korean American parents of adult children with schizophrenia. *Journal of Multicultural Nursing and Health* 11: 23-34.
- Frydenberg E (1997) *Adolescent coping: Theoretical and research perspectives*. London: Routledge.
- Bentil EE, Bentil W (2015) Understanding the Help Seeking Behavior of Accra Polytechnic Students: A qualitative approach. *Research on Humanities and Social Sciences* Vol. 5: No. 6.
- Smith JM, Robertson S, Houghton B (2006) Physicians' views on men's mental health and the role of counselling services – a pilot study. *Counselling and Psychotherapy Research* 6: 258-263.
- Martyn C (2003) *Soulwork Systemic Coaching*. New Jersey: Rutgers University Press.
- Francis K, Boyd C, Aisbett D, Newnham K, Newnham K (2006) Rural adolescents' attitudes to seeking help for mental health problems. *Youth Studies Australia* 25: 42-49.
- Myers A, Rosen JC (1999) Obesity stigmatisation and coping: Relation to mental health symptoms, body image, and self-esteem. *International Journal of Obesity and Related Metabolic Disorders* 23: 221-230.
- Perlick DA, Rosenheck RA, Clarkin JF, Maciejewski PK, Sirey J, et al. (2001) Stigma as a barrier to recovery: adverse effects of perceived stigma on social adaptation of



- persons diagnosed with bipolar affective disorders. *Psychiatric Service* 52: 1627-1632.
14. Mackenzie CS, Gekoski WL, Knox VJ (2006) Age, gender, and the underutilisation of mental health services: The influence of help seeking attitudes. *Aging and Mental Health* 10: 574-582.
  15. Lin JMS, Brimmer DJ, Boneva RS, Jones JF, Reeves WC (2009) Barriers to healthcare utilisation in fatiguing illness: a population-based study in Georgia. *Health Services Research* 9: 13.
  16. White AK (2001) Report on the Scoping Study on Men's Health. Unpublished Research Report, Leeds Metropolitan University/HMSO U.K.
  17. Möller-Leimkühler AM (2002). Barriers to help seeking by men: a review of sociocultural and clinical literature with particular reference to depression. *Journal of Affective Disorders* 71:1-9.
  18. Galdas PM, Cheater F, Marshall M (2004) Men and health help-seeking behaviour: literature review. *Integrative literature review and meta-analysis*.
  19. Good GE, Wood PK (1995) Male gender role conflict, depression, and help seeking: Do college men face double jeopardy? *Journal of Counselling and Development* 74: 70-75.
  20. Emslie C, Hunt K, Macintyre S (1999a) Gender differences in minor morbidity among full time employees of a British University. *Journal of Epidemiology and Community Health* 53: 465-475.
  21. Mohr DC, Ho J, Duffecy J, Baron KG, Lehman KA, et al. (2010) Perceived Barriers to Psychological Treatments and their Relationship to Depression. *Journal of Clinical Psychology* 66: 394-409.
  22. Hochbaum GM (1958). Public participation in medical screening program: a socio-psychological study. Public Health Service, PHS Publication 572. Washington D. C. U. S. Government Printing Office.
  23. Rosenstock IM (1960) What research in motivation suggests for public health. *American Journal of Public Health* 50: 295-301.
  24. Rosenstock IM (1966) Why people use health services. *Milbank Memorial Fund Quarterly* 44: 94-124.
  25. Rosenstock IM (1974) Historical origins of the health belief model. *Health Education Monographs* 2: 328-335.
  26. Janz NK, Champion VC, Strecher VJ (2002) The Health Belief Model in: Glanz, K., Rimer, B. K., Lewis, F. M. (Eds): *Health behaviour & health education. Theory, Research & Practice*. San Francisco: Jossey Bass 4: 45-66.
  27. Linos N, Slopen N, Berkman L, Subramanian SV, Kawachi I (2013) Predictors of help-seeking behaviour among women exposed to violence in Nigeria: a multilevel analysis to evaluate the impact of contextual and individual factors. *Journal of Epidemiologic Community Health* 68: 211-217.
  28. Portes A, Kyle D, Eaton WW (1992) Mental illness and help seeking behaviour among Mariel Cuban and Haitian refugees in South Florida. *Journal of Health and Social Behaviour* 33: 283-298.
  29. Lin JMS, Brimmer DJ, Boneva RS, Jones JF, Reeves WC (2009) Barriers to healthcare utilisation in fatiguing illness: a population-based study in Georgia. *Health Services Research* 9: 13.
  30. Dieppe P, Basler HD, Chard J, Croft P, Dixon J, et al. (1999) Knee replacement surgery for osteoarthritis: Effectiveness, practice variation, indications and possible determinants of utilisation. *Rheumatology* 38: 73-83.
  31. Oliver MI, Pearson N, Gunnell D (2005) Help seeking behaviour in men and women with common mental health problems: cross-sectional study. *The British Journal of Psychiatry* 186: 297-301.
  32. Gabriel A, Violato C (2010) Depression Literacy among patients and the public: a literature review. *Primary Psychiatry* 17: 55-64.
  33. Blum R, Rinehart P (1997) Reducing the risk: connections that make a difference in the lives of youth. Minneapolis: Division of General Paediatrics, Adolescent Health, University of Minnesota.
  34. Ezeanya SN (1980) "The contributions of African traditional religion to nation building" In E. C. Amucheazi (ed.). *Reading in Social Sciences*. Enugu: Fourth Dimension.
  35. Mettle-Nunoo EA (1993) West African Traditional Religion. *Ahithophel's series*, Vol. 1.
  36. Danquah SA (2108) The relevance of African Belief System and the patient's choice of treatment. From the existing health models in Ghana. *The Mind* 1: 11-27.