

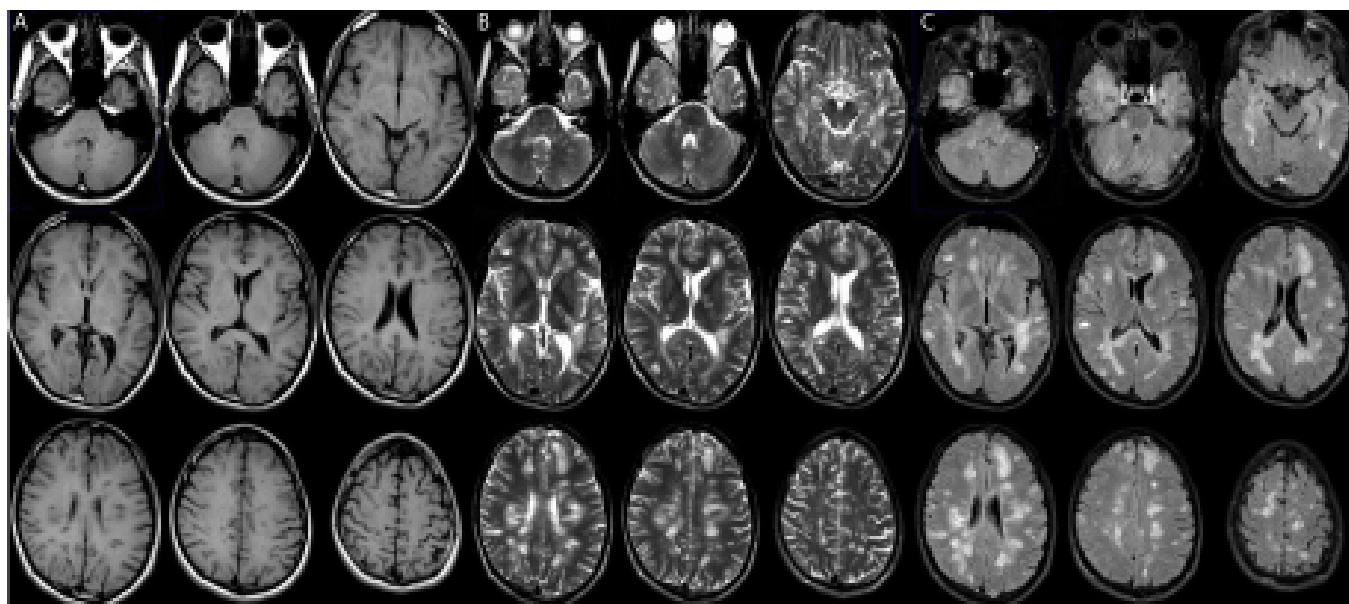
Progressive Form of Multiple Sclerosis

*Kresimir Dolic

*Kresimir Dolic

Department of Radiology, University Hospital Split, Croatia

*Corresponding author: Kresimir Dolic, Department of Radiology, University Hospital Split, Spinciceva 1, 21000 Split, Croatia, Tel: 0038521556243, E-mail: kdolic@bnac.net, kresimir.dolic@st.t-com.hr



The images depicts 33 year old female with primary progressive form of Multiple Sclerosis. A: T1; B: T2; C: Flair