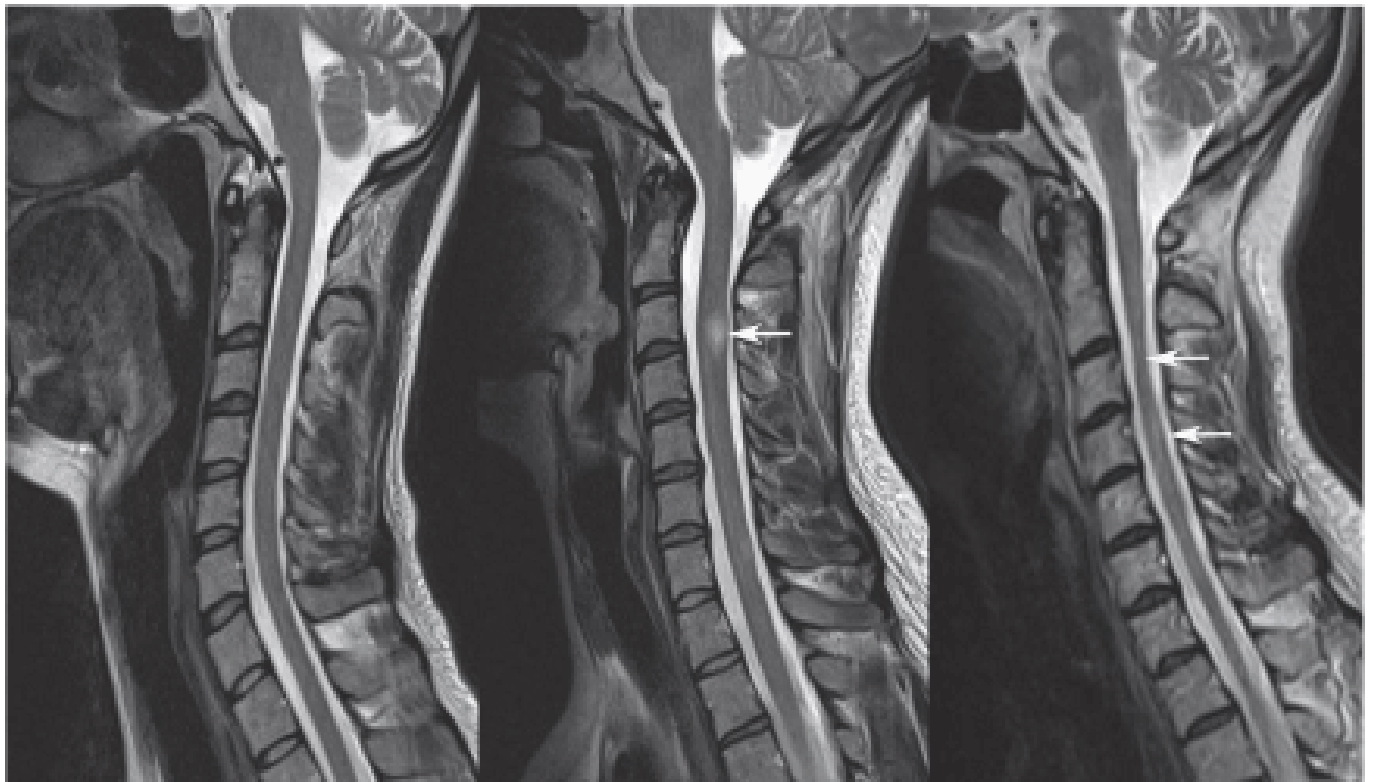


## Progressive Form of Multiple Sclerosis

\*Kresimir Dolic

Department of Radiology, University Hospital Split, Croatia

**Corresponding author:** Kresimir Dolic, Department of Radiology, University Hospital Split, Spinciceva 1, 21000 Split, Croatia, Tel: 0038521556243, E-mail: [kdolic@bnac.net](mailto:kdolic@bnac.net), [kresimir.dolic@st.t-com.hr](mailto:kresimir.dolic@st.t-com.hr)



The images depicts three cases such as healthy 28y old subject, Relapsing-remitting Multiple sclerosis patient (27 years old) showing slight cord edema due to intramedullary lesions and Primary Progressive Multiple Sclerosis (29 years old) patient with cord atrophy.